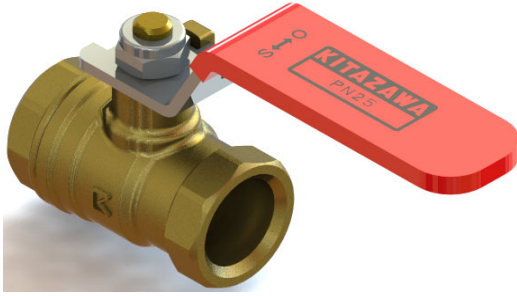


KITAZAWA

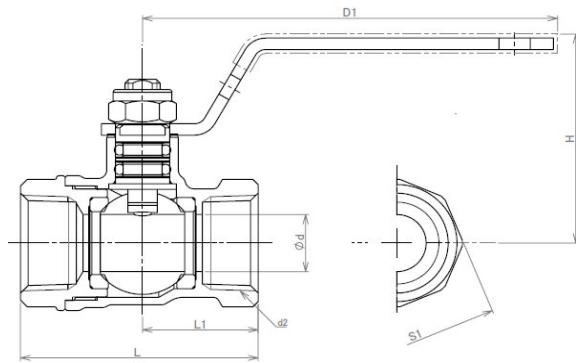
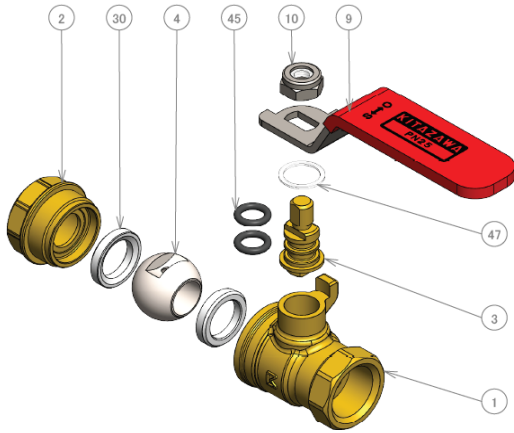
PN25 FORGED BRASS BALL VALVE

Fig: CB25B
CB25N



SPECIFICATION

- Forged Brass Body
- BSPT or NPT Threaded End
- Full Port Design
- Bolted Body and Cap
- Blow-out Proof Stem
- Double O-ring Stem Seals
- Nominal Pressure: 2.5 MPa
- Working Temperature: -10 ~ 120 °C



MATERIAL LIST

No.	PART	MATERIAL
1	BODY	FORGED BRASS
2	BODY CAP	FORGED BRASS
3	STEM	BRASS ROD ※1
4	BALL	FORGED BRASS ※2
9	HANDLE	CARBON STEEL ※3
10	HANDLE NUT	CARBON STEEL
30	BALL SEAT	PTFE
45	O-RING	FKM
47	THRUST WASHER	PBT

Note

- ※1 Ni Plating
- ※2 Ni • Cr Plating
- ※3 Zinc dichromate plated and plastic covering

⚠

- DO NOT USE FOR STEAM
- DO NOT USE UNDER FREEZE
- DO NOT FOR UNDERGROUND APPLICATION
- DO NOT USE FOR FLAMMABLE
- DO NOT USE FOR POISONOUS GAS APPLICATION
- WARRANTY ONLY APPLIES IN ASEAN

SIZE	DIMENSIONS (mm)						d2
	L	L1	D1	Ø d	H	S1	
DN 8	40.2	19.3	70	10	37	17.5	BSPT or NPT 1/4
10	40.5	19.7	70	10	37	21	3/8
15	49.6	24.8	80	15	40	25	1/2
20	57.8	28.9	80	20	43	31	3/4
25	68.2	34.1	110	25	50	38	1
32	82	41	110	32	55	47	1.1/4
40	90.4	45.2	150	40	65	54	1.1/2
50	109.6	54.8	150	50	72	66	2



Produced by KITZ VALVE & ACTUATION VIETNAM CO., LTD.

<https://kitz-kvv.com>

* All or part of the information listed on this sheet may be changed or removed without prior notice.